

# IMPERIAL VALLEY COLLEGE STANDING COMMITTEE ASSIGNMENTS FOR 2017-2018

*Last Revised: August 23, 2017*

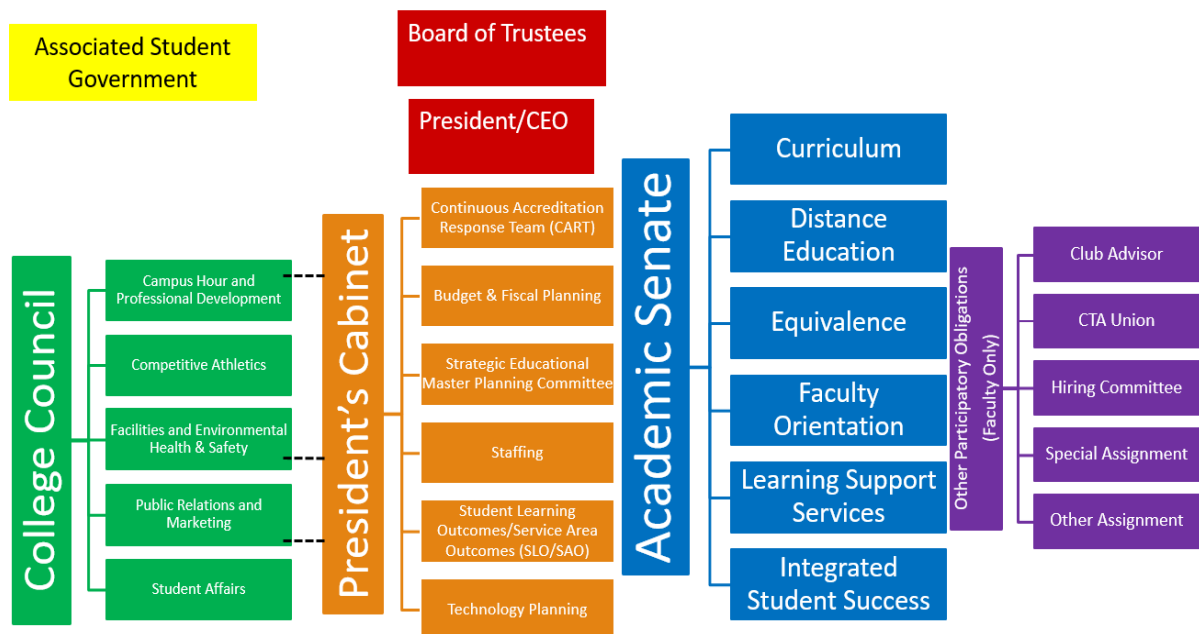
The Standing Committees of IVC, irrespective of their compositions, are formed to deal with designated subject matters that they are required to discuss and make recommendations through the Academic Senate and/or the College Council's recommendation to the Board of Trustees with the Superintendent/President's approval or support.

**IF A FACULTY MEMBER WISHES TO MAKE A REVISION TO THEIR COMMITTEE APPOINTMENT INDICATED ON THIS LIST PLEASE FILL OUT A PARTICIPATORY GOVERNANCE PREFERENCE SHEET.** Faculty appointments to some committees are subject to the ratification by the Academic Senate (Contact: Mary Lofgren at [mary.lofgren@imperial.edu](mailto:mary.lofgren@imperial.edu)).

## PARTICIPATORY GOVERNANCE STRUCTURE

Revised: 8/16/17  
Year: 2017-2018

### Participatory Governance Structure



### **ACADEMIC SENATE & SUBCOMMITTEES**

Academic Senate  
Curriculum Committee  
Distance Education Committee  
Equivalence Committee  
Faculty Orientation Committee  
Learning Support Services Committee  
Integrated Student Success Committee

### **COLLEGE COUNCIL & SUBCOMMITTEES**

College Council  
Campus Hour and Professional Development Committee  
Competitive Athletics Committee  
Facilities and Environmental Health & Safety Committee  
Public Relations and Marketing Committee  
Student Affairs Committee

### **PRESIDENT'S CABINET SUBCOMMITTEES**

Continuous Accreditation Readiness Team (CART)  
Budget & Fiscal Planning Committee  
Strategic Educational Master Planning Committee (SEMPC)  
Staffing Committee  
Student Learning Outcomes/Service Area Outcomes (SLO/SAO)  
Technology Planning Committee

### **OTHER PARTICIPATORY OBLIGATIONS/COMMITTEES**

Club Advisor  
CTA Union Representative  
Hiring Committee  
Special Assignment  
Other Assignment

# ACADEMIC SENATE AND SUB COMMITTEES

<b>ACADEMIC SENATE COMMITTEE (Elected Positions)</b>	
<b>Meeting Time</b>	<b>1<sup>st</sup> &amp; 3<sup>rd</sup> Wednesday at 12:50 P.M. - 1:50 P.M.</b>
<b>Meeting Place</b>	<b>Board Room, Building 10</b>
<b>COMPOSITION</b>	<b>MEMBER</b>
President	Mary Lofgren
President-Elect	(Selected end of academic year 2016-17)
Secretary	James Patterson
Arts, Letters, and Learning Services	Olivia Garcia
Arts, Letters, and Learning Services	Diane Harris
Arts, Letters, and Learning Services	Frank Hoppe
Arts, Letters, and Learning Services	Xochitl Tirado
Arts, Letters, and Learning Services	Olivia Garcia
Math and Sciences	Jeff Burt (Treasurer)
Math and Sciences	Temo Carboni
Math and Sciences	Suzanne Gretz
Math and Sciences	Jia Sun
Health and Public Safety	Kathy Rodriguez
Health and Public Safety	Roberta Webster
Career Technical Education & Economic and Workforce Development	Frank Miranda
Career Technical Education & Economic and Workforce Development	Alison Brock
Student Services	Ralph Marquez
Student Services	Norma Nunez
Part-Time Faculty	Michael Capeci
Part-Time Faculty	Mike Palacio, Jr.
At-Large Senator #1	Ed Wells
At-Large Senator #2	Zhong Hu
At-Large Senator #3	Richard Epps
At-Large Senator #4	Stella Orfanos-Woo
At-Large Senator #5	Jesus Esqueda
At-Large Senator #6	Cathy Zazueta
At-Large Senator #7	Gilbert Campos
At-Large Senator #8	Allyn Leon
At-Large Senator #9	Lorraine Mazeroll
Ex-Officio	Michael Heumann (Past President)
Ex-Officio	Nicholas Akinkuoye (Chief Instruction Officer)
Ex-Officio	Christine Bermudez (ASG President)

**BASIC SKILLS (Appointed)**  
**(Basic Skills and Student Success & Equity Committees have been Integrated)**

*Academic Senate Sub Committee*

<b>Meeting Time</b>	<b>4<sup>th</sup> Monday of each month</b>
<b>Meeting Place</b>	<b>Room 2727</b>
<b>COMPOSITION</b>	<b>MEMBER</b>
Basic Skills Coordinator	Audrey Morris
Recorder	Martha Navarro
Faculty Representative for Math	Mardjan Shokoufi
Faculty Representative for Writing	Roberta Bemis
Faculty Representative for ESL	Ed Scheuerell
Faculty Representative for Reading	Nancy Lay
Faculty Representative for Counseling	Norma Nunez
Faculty Representative for Career Technical	Gordon Bailey
Faculty Representative for Learning Services	Terry Norris
Faculty Representative for Math Lab Tutorial Specialist	Zhong Hu
Faculty Representative for Non-Basic Skill Discipline	Russell Lavery
Department Chair – ESL	Sydney Rice
Department Chair – English	Michael Heumann
Department Coordinator – Math	Allyn Leon
Counselor	Beatriz Alvarado

<b>CURRICULUM COMMITTEE (Appointed)</b> <i>Academic Senate Sub Committee</i>	
<b>Meeting Time</b>	<i>1<sup>st</sup> &amp; 3<sup>rd</sup> Thursday at 3:05 P.M</i>
<b>Meeting Place</b>	<b>Board Room</b>
<b>COMPOSITION</b>	<b>MEMBER</b>
Voting Members	<ul style="list-style-type: none"> <li>• Nicholas Akinkuoye, Chief Instructional Officer</li> <li>• Craig Blek, Academic Senate Representative (Committee Chair)</li> <li>• Kevin White, Behavioral/Social Science Department Chair</li> <li>• Andres Martinez, Business Department Chair</li> <li>• David Drury, Exercise Science/Wellness/Sport Department Chair</li> <li>• Daniel Gilison, Science/Math and Engineering Department Chair</li> <li>• Carol Hegarty, Humanities and World Languages Department Chair</li> <li>• Michael Heumann, English Department Chair</li> <li>• Sydney Rice, ESL Department Chair</li> <li>• Jose Velasquez, Industrial Technology Department Chair</li> <li>• Jose Ruiz, World Languages and Speech Communication Coordinator</li> <li>• Allyn Leon, Mathematics/Engineering Coordinator</li> <li>• Xochitl Tirado, Distance Education Coordinator</li> <li>• Veronica Soto, Articulation Officer</li> <li>• Norma Nava, Disabled Student Programs and Services Director</li> <li>• Trinidad Arguelles, Counseling Representative</li> <li>• Cathy Zazueta, Assistant Librarian</li> <li>• Associated Student Government Representative</li> </ul>
Consultants	<ul style="list-style-type: none"> <li>• Tina Aguirre, Dean of Health and Sciences</li> <li>• David Zielinski, Dean of Arts, Letters and Learning Services</li> <li>• Efrain Silva, Dean of Economic and Workforce Development/Non-Credit Coordinator</li> <li>• David Drury, Interim Dean of Math and Sciences</li> <li>• Martha Garcia, Vice President for Student Services</li> <li>• Gloria Carmona, Director of Admissions and Records</li> <li>• Veronica Soto, Transfer Center Director</li> <li>• Norma Nunez, Student Success and Support Services Director</li> <li>• Becky Green, Child, Family and Consumer Sciences Director</li> <li>• Audrey Morris, Basic Skills</li> <li>• SLO Coordinator</li> </ul>
Recorder	Dixie Krimm

<b>DISTANCE EDUCATION COMMITTEE (Appointed)</b> <i>Academic Senate Sub Committee</i>	
<b>Meeting Time</b>	<b>3<sup>rd</sup> Tuesday of each month, 12:50 p.m. – 1:50 p.m.</b>
<b>Meeting Place</b>	<b>Room 3102</b>
<b>COMPOSITION</b>	<b>MEMBER</b>
Co-Chair (DE Coordinator)	Xochitl Tirado
Co-Chair (Administrative Representative)	Nicholas Akinkuoye, CIO
Faculty Representative #1	Nannette Kelly
Faculty Representative #2	Kevin Howell
Faculty Representative #3	Austen Thelen
Faculty Representative #4	Terrie Sullivan
Faculty Representative #5 (Non-Teaching)	Kristen Gomez
Faculty Representative #6 (Part-Time)	Glenn Granish
Classified Representative	Martha Olea
Technology Representative	Omar Ramos
DSPS Representative	VACANT
Student Representative	Benjamin Barajas
Alternate – Administrative Representative	David Drury
Alternate – DSPS Representative	Norma Nava
Alternate – Technology Representative	Jeff Enz
Recorder (Non-Voting)	Melody Chronister

<b>EQUIVALENCE COMMITTEE (Appointed)</b> <i>Academic Senate Sub Committee</i>	
<b>Meeting Time</b>	<i>TBD</i>
<b>Meeting Place</b>	<b>TBD</b>
<b>COMPOSITION</b>	<b>MEMBER</b>
Chair	Mary-Jo Wainwright
Faculty	Eric Lehtonen Deirdre Rowley
Faculty (Alternate)	Norma Nunez Cathy Zazueta

<b>FACULTY ORIENTATION COMMITTEE (Appointed)</b> <i>Academic Senate Sub Committee</i>	
<b>Meeting Time</b>	<i>Meets twice a semester to discuss general equivalence issues and as needed to review individual applications for equivalence</i>
<b>Meeting Place</b>	<b>TBD</b>
<b>COMPOSITION</b>	<b>MEMBER</b>
Chair	Eric Lehtonen
Faculty	Rick Epps Barbara Reyes Nicole Rodiles Cynthia Spence Elizabeth Kemp John Clarkson Melani Guinn Daniel Ortiz Pedro Colio Cristal Mora Carlos Araiza Sergio Pesqueira Diana Barrios Brandilyn Davidson Christina Shaner Jose Roman

<b>LEARNING SUPPORT SERVICES COMMITTEE (Appointed)</b> <i>Academic Senate Sub Committee</i>	
<b>Meeting Time</b>	Twice a semester; 6 <sup>th</sup> and 11 <sup>th</sup> week of the semester Thursday during College Hour 12:50 pm. – 1:50 p.m.
<b>Meeting Place</b>	Building 1500, Room 1502 located in the Library
<b>COMPOSITION</b>	<b>MEMBER</b>
Chair	Dean David Zielinski
Recording Secretary	Toni Gamboa
Faculty (Indefinite Number)	<ol style="list-style-type: none"> <li>1. Eddie Chang</li> <li>2. Walid Ghanim</li> <li>3. Frank Hoppe</li> <li>4. Terry Norris</li> <li>5. Josefina Ponce</li> <li>6. Aleksandr Voldman</li> <li>7. Cathy Zazueta</li> <li>8. Jim Pendley</li> </ol>
Classified	<ol style="list-style-type: none"> <li>1. Norma Gonzalez</li> <li>2. Josue Verduzco</li> <li>3.</li> </ol>
Student	<b>1 Student – Appointed by Superintendent/President</b>

**INTEGRATED STUDENT SUCCESS COMMITTEE** (Appointed)  
**(Basic Skills and Student Success & Equity Committees have been Integrated – formerly Student Success & Equity)**  
*Academic Senate Sub Committee*

<b>Meeting Time</b>	<i>TBD</i>
<b>Meeting Place</b>	<i>TBD</i>
<b>COMPOSITION</b>	<b>MEMBER</b>
Administrative Representative from Student Services	Martha Garcia
Administrative Representative from Academic Services	David Zielinski (Co-Chair)
Student Success and Support Program Director	Norma Nunez (Co-Chair)
Recorder	Adriana Sano
Faculty Representative from English	VACANT
Faculty Representative from Math	Allyn Leon
Faculty Representative from non-Basic Skills Department	Todd Hansink
Student Equity Coordinator	Kristen Gomez
District Counseling Coordinator	Trini Arguelles
CaWORKS Coordinator	Isabel Sigala
Disabled Students Programs and Services Director	Norma Nava
EOPS Coordinator	Olga Artech
Transfer, Articulation, and University Partnerships Coordinator	Veronica Soto
Student Representative	Appointed by ASG
Classified Staff Representative	Bettsie Montero
Consultants	Institutional Researcher Director of Application Services Student Success Specialist (classified) Director of Admissions and Records Director of Financial Aid Library Representative



# COLLEGE COUNCIL AND SUB COMMITTEES

<b>COLLEGE COUNCIL</b>	
<b>Meeting Time</b>	<i>4<sup>th</sup> Wednesday at 12:50 – 1:50 P.M.</i>
<b>Meeting Place</b>	<i>Board Room, Building 10</i>
<b>COMPOSITION</b>	<b>MEMBER</b>
Administrative Representative	Jeff Enz
Administrative Representative	Efrain Silva
Administrative Representative	Tina Aguirre
Administrative Representative (Alternate)	Everardo Martinez-Inzunza
Administrative Representative (Alternate)	David Zielinski
Faculty Representative	Rick Castrapel
Faculty Representative	Ric Epps
Faculty Representative	Aaron Edwards
Faculty Representative (Alternate)	Caroline Bennett
Faculty Representative (Alternate)	Cathy Zazueta
Faculty Representative (Alternate)	Mike Palacio, Jr.
Classified Representative (Chair)	Yethel Alonso
Classified Representative (Vice Chair)	Melody Chronister
Classified Representative	Erika Aguilar
Classified Representative (Alternate)	Silvia Murray
Classified Representative (Alternate)	Claudia Aguilar
Classified Representative (Alternate)	Jose Torres
CMCA Representative	Lisa Seals
CMCA Representative	Jose Carrillo
CMCA Representative	Vacant
CMCA Representative (Alternate)	Liz Cantu
CMCA Representative (Alternate)	Rick Webster
Student Representative (Alternate)	Christine Bermudez
Student Representative	Aimee Galeana
Student Representative	Benjamin Barajas
Student Representative (Alternate)	Karen Villa
Ex Officio	Dr. Victor Jaime

**CAMPUS HOUR AND PROFESSIONAL DEVELOPMENT COMMITTEE**

<b>Meeting Time</b>	<i>TBD</i>
<b>Meeting Place</b>	<i>TBD</i>
<b>COMPOSITION</b>	<b>MEMBER</b>
Co-Chair	John Lau, Interim CHRO
Co-Chair & Faculty Member (Appointed)	Lisa Solomon
Recorder	Jessica Waddell
Faculty Members (Appointed)	Zhong Hu
Faculty Members (Appointed)	Susan Moss
Alternate Faculty Member	TBD
Administrator	Everardo Martinez-Inzunza
Alternate Administrator	Efrain Silva
CMCA	Omar Ramos
PTFA	TBD

**COMPETITIVE ATHLETICS COMMITTEE**

<b>Meeting Time</b>	<i>2<sup>nd</sup> Thursday of each month, 12:00 p.m.</i>
<b>Meeting Place</b>	<i>Building 700, Room 700</i>
<b>COMPOSITION</b>	<b>MEMBER</b>
Chair	Jim Mecate
Recording Secretary	Sandie Noel
Faculty	Kevin Marty Cuauhtemoc Carboni Jill Tucker Eric Lehtonen Andrew Robinson Mike Palacio Jr.
Community Members	Jeff Sturdervant Emma Jones
Classified Representative	Chris Mays Sara Hernandez
Student Representative	Christine Bermudez

## FACILITIES AND ENVIRONMENTAL HEALTH & SAFETY COMMITTEE

<b>Meeting Time</b>	<i>TBD</i>
<b>Meeting Place</b>	<i>TBD</i>
<b>COMPOSITION</b>	<b>MEMBER</b>
1 District's Safety Administrator	Everardo Martinez-Inzunza (Chair)
Recorder	Saria Cardoza
1 Director of Maintenance and Operations	Rick Webster (Committee Vice Chair)
1 Administrator and 1 alternate appointed by Administrative Council	Nick Akinkuoye John Lau (Alternate)
1 Classified member appointed by CSEA and 1 Alternate	Carol Cortes-Ramirez, Rhonda Ruiz
1 Student appointed by ASG President	
2 faculty members and 1 alternate appointed by academic Senate	Oscar Hernandez Steve Holt; Alternate: Vacant
1 CMCA member and 1 alternate appointed by CMCA	Becky Green 1 Vacant

## PUBLIC RELATIONS AND MARKETING COMMITTEE

<b>Meeting Time</b>	<i>TBD – During Campus Hour</i>
<b>Meeting Place</b>	<i>TBD</i>
<b>COMPOSITION</b>	<b>MEMBER</b>
Co-Chair	Mike Nicholas
Co-Chair (Public Relations Consultant)	Bill Gay
Recorder	Angie Gallo
Administrative Representative	Efrain Silva
Administrative Representative	Everardo Martinez-Inzunza
Faculty – at least 2 faculty member appointed by Academic Senate	Kathy Rodriguez Norma Nunez
Classified Representative	Patricia Robles
Classified Representative	Monica Rogers
Classified Representative	Miriam Trejo
CMCA Representative	Omar Ramos
CMCA Representative	Gloria Carmona
CMCA Representative	Lisa Seals
Student Representative	Christine Bermudez
Student Representative	TBD

**STUDENT AFFAIRS COMMITTEE**

<b>Meeting Time</b>	<i>2<sup>nd</sup> Thursday at 12:50 p.m. (Campus Hour)</i>
<b>Meeting Place</b>	<i>Board Room</i>
<b>COMPOSITION</b>	<b>MEMBER</b>
Chair	Everardo Martinez-Inzunza
Recording Secretary	Saria Cardoza
4 Faculty	Jeffrey Beckley Trini Arguelles Gilbert Campos Tanya Dorsey Jesus Esqueda Carey Frstrup Rosie Lopez Lorraine Mazeroll Jose Plascencia Isabel Sigala Robert Baukholt Terry Norris Javier Rangel Nicole Rodiles
4 Classified	1. Isabel Contreras 2. Norma Santana 3. Maria Trejo 4. Miriam Trejo
4 Students	1. Christine Bermudez 2. Benjamin Barajas 3. Brianna Guzman 4. Ubaldo Chavez

# RESOURCE PLANNING SUBCOMMITTEES

CONTINUOUS ACCREDITATION READINESS TEAM (CART)	
<b>Meeting Time</b>	<i>1<sup>st</sup> and 3<sup>d</sup> Tuesdays at 3:30 p.m.</i>
<b>Meeting Place</b>	<i>Board Room</i>
<b>COMPOSITION</b>	<b>MEMBER</b>
Co-Chair	James Patterson
Co-Chair	Tina Aguirre
Recorder	Linda Amidon
Vice President for Academic Services (Accreditation Liaison Officer)	Nicholas Akinkuoye
Administrative Council	Nicholas Akinkuoye, CIO and ALO Lennor Johnson, Interim Dean of Counseling Everardo Martinez-Inzunza, Dean Martha Garcia, CSSO Tina Aguirre, Dean David Zielinski, Dean Efrain Silva, Dean/SEMPC Co-Chair David Drury, Interim Dean John Lau, CBO/Interim CHRO (Consultant) Jose Carrillo, Director of Institutional Research (Consultant) Carlos Fletes, Director of Fiscal Services (Consultant)
Faculty	
Academic Senate	
College Council	Erica Aguilar
Department Chairs and Coordinators	Allyn Leon, Chair Michael Heumann, Chair Jose Velasquez, Chair Sydney, Chair Andrew Robinson, Chair Trinidad Arguelles, Counseling Coordinator
Institutional Researcher (Consultant)	Also under Administrative Council (Jose Carrillo)
SLO Coordinator (Consultant)	Kevin Howell and Jill Kitzmiller
DE Coordinator (Consultant)	Xochitl Tirado
ASG Representative	Benjamin Barajas
Basic Skills Coordinator (Consultant)	Audrey Morris
Classified Staff	Erica Aguilar
Confidential Staff	Adriana Sano Linda Amidon

**BUDGET AND FISCAL PLANNING COMMITTEE**  
*(Appointed Positions)*

<b>Meeting Time</b>	4th Wednesday of the month during the Fall and Spring semesters at 2:00 p.m. <i>(subject to change)</i>
<b>Meeting Place</b>	<i>Board Room</i>
<b>COMPOSITION</b>	<b>MEMBER</b>
Co-Chair, Vice President for Business Services	John Lau, VP Business Services, Co-chair
Co-Chair, Classified Representative	Matthew Thale
One Administrative Representative appointed by the Superintendent/President	Nick Akinkuoye, VP Academic Services Martha Garcia (Alternate) Jeff Enz (Alternate)
Academic Senate Representative	Mary Lofgren
Director of Fiscal Services	Carlos Fletes, Director of Fiscal Services
Two Faculty Representatives appointed by the Academic Senate	Zhong Hu, Faculty Representative Michael Heumann, Faculty Representative
Two Classified Representatives	Mike Nicholas, CSEA Rep. Matthew Thale, CSEA Representative (Co-Chair)
One CMCA Representative	Jeff Cantwell, CMCA Representative
College Council Representative	Melody Chronister
One Student Representative	TBD

**STRATEGIC EDUCATIONAL MASTER PLANNING COMMITTEE (SEMP)**

<b>Meeting Time</b>	<i>TBD</i>
<b>Meeting Place</b>	<i>Board Room</i>
<b>COMPOSITION</b>	<b>MEMBER</b>
Co-Chair	Lennor Johnson, Dean of Counseling
Co-Chair	Efrain Silva
Recorder	Carol Cortes-Ramirez
Administrator	Tina Aguirre
CMCA Representative	Linda Amidon
CMCA Representative	Jose Carrillo
Consultant	Bill Gay
Administrator	Nicholas Akinkuoye
Faculty	Trini Arguelles
Faculty	Daniel Gilison
Faculty	Carol Hegarty
Faculty	Terry Norris
Faculty	Sydney Rice
Faculty	Jose Ruiz
Faculty	Andrew Robinson

<b>STAFFING COMMITTEE</b>	
<b>Meeting Time</b>	<i>TBD</i>
<b>Meeting Place</b>	<i>Board Room</i>
<b>COMPOSITION</b>	<b>MEMBER</b>
Chair	John Lau
2 faculty members appointed by the Academic Senate and 1 alternate	Norma Nunez Hope Davis Eddie Chang
Recording Secretary	Jessica Waddell
2 classified members appointed by CSEA and 1 alternate	Silvia Murray Frances Arce-Gomez
2 administrators: The Chief Human Resources Officer (CHRO) and one other appointed by the Administrative Council and 1 alternate	John Lau, interim CHRO Lennor Johnson, Interim Dean of Counseling Dave Drury, Dean (Alternate)
1 member of the Classified Management and 1 alternate	Jeff Cantwell Becky Green
1 member of the Classified Confidential and 1 alternate	Vikki Carr Linda Amidon
2 students appointed by the ASG and 1 alternate	Ashley Martinez Ruben Villa Kristian Ruiz (Alternate)
Non-Voting Members – Recording Secretary	HR Administrative Assistant
Non-Voting Members – HR Analysts	Consultant
Alt Faculty Rep	Jill Kitzmiller

<b>STUDENT LEARNING OUTCOME (SLO)/SERVICE AREA OUTCOME (SAO) COMMITTEE</b> <i>(Appointed by the Academic Senate)</i>	
<b>Meeting Time</b>	<i>TBD</i>
<b>Meeting Place</b>	<i>TBD</i>
<b>COMPOSITION</b>	<b>MEMBER</b>
SLO Coordinator – Co-Chair	Kevin Howell
SLO Coordinator – Co-Chair	Jill Kitzmiller
Recorder	Dixie Krimm
1 Dean from Academic Services	David Zielinski
4 At-large Teaching Faculty Representatives, each from a different division	TBD Audrey Morris Romano Sanchez Dominguez Jill Kitzmiller
2 At-large Non-Teaching Faculty Representatives, each from a different division	Frank Hoppe
2 Classified Representatives, each from a different division	Sandie Noel Mary Ann Smith

<b>STUDENT SERVICES COUNCIL</b>	
<b>Meeting Time</b>	<i>Meets 1<sup>st</sup> and 3<sup>rd</sup> Thursday</i>
<b>Meeting Place</b>	<i>Board Room</i>
<b>COMPOSITION</b>	<b>MEMBER</b>
Chair	Martha Garcia, CSSO
Faculty	Trini Arguelles Dolores Diaz Maria Esquer Norma Nava Norma Nunez Lilia Sandoval Olga Artech Rosalie Lopez Veronica Soto Myriam Fletes Kristen Gomez
Deans	Everardo Martinez-Inzunza
Directors	Lisa Seals Gloria Hoisington Jose Carrillo

<b>TECHNOLOGY PLANNING COMMITTEE</b>	
<b>Meeting Time</b>	<i>2<sup>nd</sup> Tuesday of each month from 12:50 – 1:50 P.M. (Campus Hour)</i>
<b>Meeting Place</b>	<i>Board Room</i>
<b>COMPOSITION</b>	<b>MEMBER</b>
2 administrators (including chair) appointed by Administrative Council	Jeff Enz, Chair Dave Drury
2 faculty members (including co-chair) appointed by the Academic Senate	TBD Mark Duva
DE Coordinator	Xochitl Tirado
2 CMCA members (1 Management, 1 Confidential)	Adriana Sano VACANT
2 CSEA classified members	Dixie Krimm Gabriel Gonzalez
2 students appointed by ASG	Amy Diaz Benjamin Barajas
1 Chair of Banner Users' Group	Jeff Cantwell
Recorder	Angie Gallo



# OTHER PARTICIPATORY OBLIGATIONS/COMMITTEES FACULTY ONLY

## CLUB ADVISOR

*See Student Affairs for a Complete List of Clubs*

## CTA UNION REPRESENTATIVE

*See CTA Union for more information.*

## HIRING COMMITTEE

*See Human Resources for participation in this committee.*

## SPECIAL ASSIGNMENT

*See Area Dean or Supervisor for special assignment.*

## OTHER ASSIGNMENT

*See Area Dean or Supervisor for other assignment.*