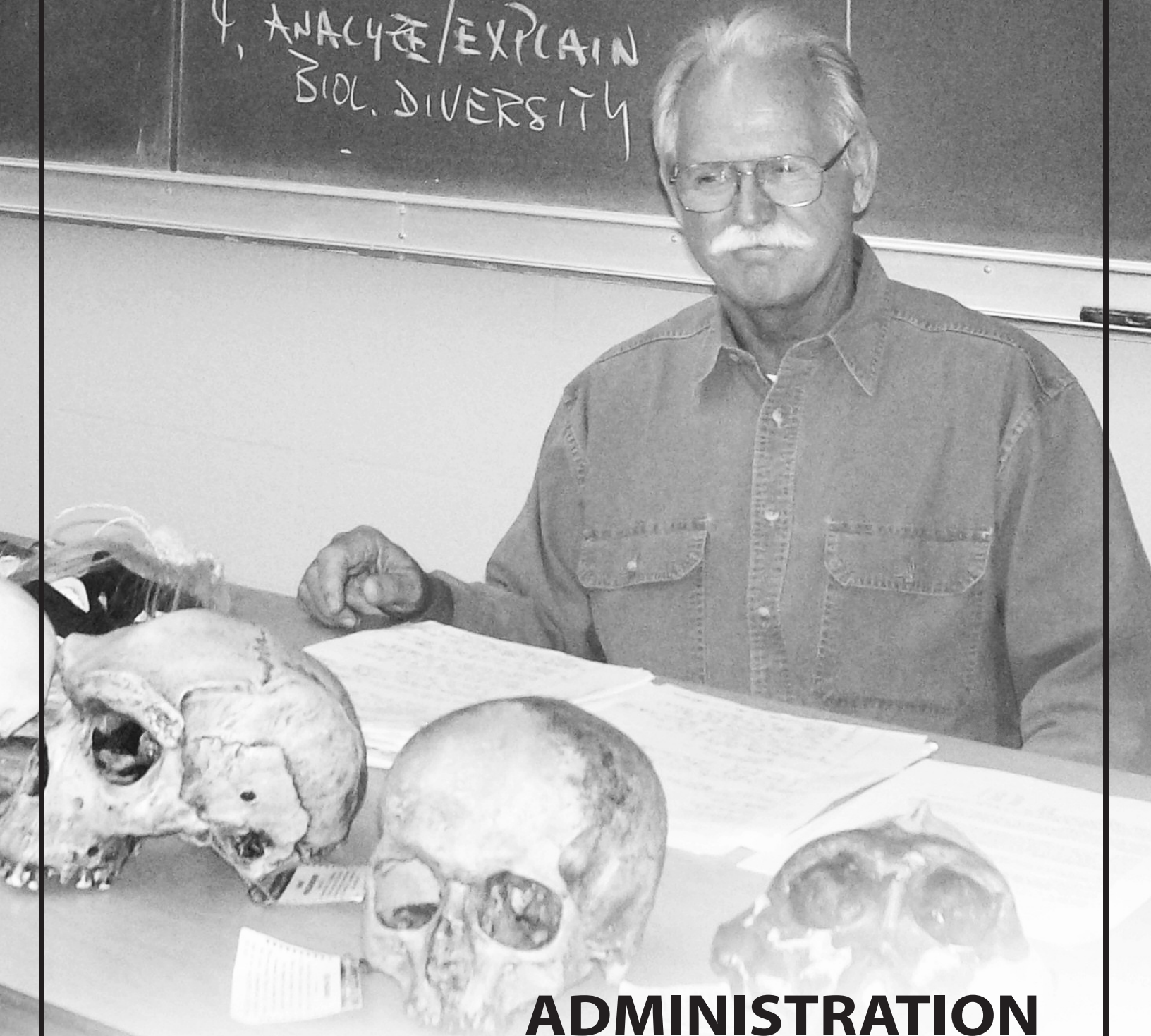


PHYSICS

3. EXPLAIN HUMAN DEVELOPMENT THROUGH FOSSILS

4. ANALYZE/EXPLAIN BIOL. DIVERSITY



**ADMINISTRATION
AND FACULTY**

Administration

DOUGHERTY, CLINT

Chief Human Resources Officer
MS., Troy State University
BA., Saint Leo College
AA., San Diego City College

DRURY, DAVID

Dean of Math and Sciences, Professor
M.S., Brigham Young University
B.S., University of LaVerne

ENZ, JEFFREY

Chief Technology Officer
MPA., Grand Canyon University
B.S., University of Phoenix

GARCIA, JOSANNA

Vice President for Administrative Services
B.S., California Coast University
A.S., Victor Valley Community College

GARCIA, MARTHA

Superintendent/President
Ed.D., San Diego State University
M.S., National University
B.S., San Diego State University
A.A., Imperial Valley College

GREEN, REBECCA

Director of Early Childhood Education Programs
M.S., Capella University
B.A., San Diego State University
A.A., Imperial Valley College

JOHNSON, LENNOR

Interim Vice President for Student Services
Ed.D., Argosy University
MBA., Governors State University
BA., Robert Morris University

LANE, BETSY

Associate Dean/Workforce Preparation and Community Special Projects
M.A., University of Northern Colorado
B.A., California State University, Long Beach

PESQUEIRA, SERGIO JR.

Interim Dean of Student Services and Special Projects
M.A., Loyola Marymount University
B.A., University of San Diego

PRICE, ROBERT

Dean of Instruction - Health and Public Safety
Ed.D., Creighton University
M.A., California State University, San Bernardino
B.S., Regents College, University of State of New York

SILVA, EFRAIN

Dean of Economic and Workforce Development
M.B.A., Northern Arizona University
B.A., San Diego State University
A.A., Imperial Valley College

TAFOYA, CHRISTINA

Vice President for Academic Services
DDS., University of Southern California
B.A., Mount St. Mary's College
A.A., Oxnard College
A.S., Ventura College

TORRES, VICTOR

Dean/Student Affairs and Enrollment Services
M.A., Point Loma Nazarene University
B.A., San Diego State University

WEBSTER, ROBERTA

Interim Associate Dean of Nursing and Allied Health
M.S., University of San Diego
B.S., University of San Diego

ZIELINSKI, DAVID

Dean of Arts, Letters and Learning Services, Professor
M.A., San Diego State University
A.B., San Diego State University

The Faculty

ALSHYKHLY, OMAR

Assistant Professor, Chemistry
Ph.D., University of Utah, Salt Lake City
M.S., University of Baghdad/Iraq
B.S., University of Baghdad/Iraq

ALVARADO, BEATRIZ

Counselor, Professor
M.A., University of San Diego
B.A., San Diego State University
A.A., Imperial Valley College

ARAIZA, CARLOS

Assistant Professor, Welding
A.S., Imperial Valley College

ARGÜELLES, TRINIDAD

Counseling Chair, Professor
M.A., University of Redlands
B.A., San Diego State University
A.A., Imperial Valley College

ARMENTA, CELESTE

Professor, Nursing
F.N.P., University of San Diego
M.S., National University
B.S., National University

ARTECHI, G. OLGA

EOPS/CARE Coordinator, Professor
M.A., San Diego State University
B.A., San Diego State University

AVILA, BEATRIZ

Counselor, Professor
M.A., University of Redlands
B.S., California Polytechnic State University, San Luis Obispo

BAILEY, GORDON

Associate Professor, CIS/CISCO Networking
M.A., Southern Oregon University
B.A., University of Alaska
A.S., University of Alaska

BARCROFT, SHAWN

Assistant Professor, History
M.A., California State University, Sacramento
B.A., University of Nevada, Reno

BAUKHOLT, ROBERT*Professor, English*

M.A., California State University, Northridge
 B.A., University of California, Los Angeles
 A.A., College of the Canyons

BECKLEY, JEFFREY*Professor, Business*

J.D., University of Washington
 B.A., Idaho State University

BEMIS, ROBERTA*Professor, English*

M.A., Northern Arizona University
 B.A., San Diego State University

BENEDICTO, ALTO*Professor, Chemistry*

Ph.D., California Institute of Technology
 M.A., Claremont Graduate University
 B.S., University of the Philippines

BENNETT, CAROLINE*Associate Professor, Mathematics*

M.A., San Diego State University
 B.A., San Diego State University

BEOPE, NIKOLAI*Assistant Professor, English*

M.F.A., University of California, San Diego
 B.A., San Diego State University
 A.A., Grossmont Community College

BISI, BIANCA*Student Equity Coordinator*

M.A., University of New Haven
 B.A., Woodbury University

BLEK, CRAIG*Professor, Economics*

M.A., University of Delaware
 B.A., University of California, Los Angeles

BROCK, ALISON*Associate Professor, Office Technologies*

M.S., San Diego State University
 B.S., William Woods University

BURT, JEFFERY*Assistant Professor, Mathematics*

M.A., San Diego State University
 B.A., San Diego State University
 A.S., Imperial Valley College

BUTLER, ALAN*Assistant Professor, Automotive Technology*

B.S., San Diego State University
 AS., San Diego City College

CAMPOS, GILBERT*Counselor, Professor*

M.A., University of Redlands
 B.A., San Diego State University

CAÑEZ - SAVALA, SAID*Counselor, Professor*

M.Ed., University of San Diego
 B.A., San Diego State University

CARBONI, CUAUHEMOC*Assistant Professor, Physical Education/Health*

Ph.D., University of New Mexico
 M.S., Humboldt State University
 B.S., Humboldt State University

CASTRAPEL, RICK*Professor, Computer Science/Mathematics*

M.A., Claremont Graduate University
 B.A., Portland State University

CASTRO, GUADALUPE*Clinical Mental Health Counselor, Associate Professor*

NFT/M.S.C., University of Phoenix
 B.A., San Diego State University
 A.A., Imperial Valley College

CAUCHON, STEVEN*Assistant Professor, Political Science*

Ph.D., University of California, Riverside
 M.A., University of California, Riverside
 B.A., California State University, San Diego

CHANG, EDDIE*Professor, Biology*

Ph.D., University of Missouri
 M.A., San Francisco State University
 B.S., University of San Francisco

CHIEN, ANDREW*Professor, Biology*

Ph.D., University of Illinois
 M.S., Oklahoma State University
 M.B.A., California State University, Los Angeles
 B.S., Southeast Missouri State University

CLARKSON, JOHN*Assistant Professor, English as a Second Language*

J.D., Ventura College of Law
 M.A., Northern Arizona University
 M.A., Stanford University
 M.A., University of California, Santa Barbara
 B.A., Prescott College

COLIO, PEDRO*Assistant Professor, Nursing*

M.S., University of San Diego
 B.S., San Diego State University
 A.A., Imperial Valley College

CORMIER, JUDY*Professor, English*

M.A., California State University, Long Beach
 B.A., California State University, Long Beach
 A.A., Golden West College

COZZANI, ALEJANDRO*Professor, Physics/Mathematics*

Ph.D., American World University
 M.S., American World University
 M.A., San Diego State University
 M.S., Chadwick University
 B.S., Instituto Nacional Superior del Profesorado "Dr. Joaquin V Gonzalez"

CRAVEN, JULIE*Professor, English as a Second Language*

M.A., United States International University
 B.A., San Diego State University
 A.A., Fullerton College

CRUM, STEVEN*Assistant Professor, Biology*

BS., Shahid Beheshi University
 MS., Alzahra University

DAVIDSON, BRANDILYN*Assistant Professor, Music*

M.M., University of Nevada, Las Vegas
 B.M., University of North Texas

DAVIS, HOPE*Professor, Music*

Ph.D., University of Southern Mississippi
 D.M.A., Louisiana State University
 M.A., University of Wyoming
 B.M., Royal College of Music/Trinity College
 A.M., Trinity College

DEYO, JEFF*Professor, Exercise Science, Wellness & Sports*

M.S., West Virginia University
 B.A., Mount Marty College

DIAZ, DOLORES*Student Support Services*

Project Director, Professor
 M.Ed., University of San Diego
 B.A., San Diego State University

DORSEY, TANYA*Counselor, Professor*

M.A., University of Redlands
 B.A., San Diego State University
 A.A., Imperial Valley College

DUVA, MARK*Associate Professor, Psychology*

Ph.D., University of California, Riverside
 M.A., University of California, Riverside
 B.A., California State Polytechnic University, Pomona

EDWARDS, AARON*Professor, Philosophy*

M.A., San Diego State University
 B.A., San Diego State University
 A.A., San Diego Mesa Community College

EPPS, RICHARD*Assistant Professor, Political Science*

M.A., University of California, Los Angeles
 B.A., University of California, Los Angeles

ESQUEDA, JESUS*Counselor, Professor*

M.A., United States International University
 B.A., San Diego State University

ESQUER, MARIA*Counselor, Professor*

M.A., Point Loma Nazarene University
 B.A., San Diego State University
 A.A., Imperial Valley College

FINNELL, LILLIAN

CalWorks Counselor-Coordinator
M.Ed., Northern Arizona University
B.A., San Diego State University
A.A., Imperial Valley College

FISHER, JAMES

Professor, Chemistry
Ph.D. University of Idaho
B.A., University of Montana

FITZSIMMONS, RICHARD

Professor, Nursing
F.N.P., Clarkson College
M.S.N., Madonna University
B.S.N., Madonna University

FLETES, MYRIAM

Educational Talent Search Project Director, Professor
M.A., University of Redlands
B.A., University of Arizona

FRISTRUP, CAREY

Counselor, Professor
M.A., Point Loma Nazarene University
B.A., San Diego State University

GARCIA, ANALISE

Counselor/Assistant Professor
M.S., National University
B.A., San Diego State University
A.A., Imperial Valley College

GARCIA, OLIVIA

Professor, English
M.A., National University
B.A., San Diego State University

GARCIA, RAQUEL

Instructional Specialist, Professor
M.A., United States International University
B.A., San Diego State University

GARZA, ALEJANDRO

Professor, English as a Second Language
M.A., California State Polytechnic University, Pomona
B.A., California State University, Los Angeles
A.A., Pasadena City College

GHANIM, WALID

Professor, Computer Information Systems
M.A., California State University, Dominguez Hills
B.S., California State University, Dominguez Hills

GILISON, DANIEL

Professor, Biology
Ph.D., Stanford University
B.A., Johns Hopkins University

GOMEZ, KRISTEN

Transfer Center Coordinator and Articulation Officer, Assistant Professor
M.A., University of Redlands
B.S., California State Polytechnic University, San Luis Obispo

GRETZ, SUZANNE

Professor, History
M.A. California State University, Fullerton
B.A. University of California, Santa Barbara

GUINN, MELANI

Assistant Professor, Communication Studies
Ph.D., University of California, Berkeley
M.A., University of California, Berkeley
B.A., University of California, Berkeley

HANSINK, TODD

Professor, Business
M.P.A., Brigham Young University
B.S., Brigham Young University

HARRIS, DIANE

Professor, English as a Second Language
M.A., California State University, Fresno
B.A., California State University, Fresno

HEGARTY, CAROL

Professor, Art
M.F.A., School of the Art Institute of Chicago
B.F.A., School of the Art Institute of Chicago

HERNANDEZ, OSCAR

Professor, Mathematics
B.S., San Diego State University

HEUMANN, MICHAEL

Professor, English
Ph.D., University of California, Riverside
M.A., University of California, Riverside
B.A., University of California, Riverside

HOLT, STEVE

Professor, Emergency Medical Technologies
BS., Grand Canyon University
A.S., Imperial Valley College

HOPPE, FRANK

Reference Librarian, Professor
M.L.I.S., University of California, Los Angeles
B.A., Antioch University

HORTON, SIDNE

Professor, Exercise Science, Wellness & Sports
M.S., California State Polytechnic University, Pomona
M.A., California State University, Sacramento
B.A., California State University, Long Beach

HOWELL, KEVIN

Professor, English
M.S., Suny Cortland
M.A., Suny Binghamton
B.A., Temple University

HU, ZHONG

Assistant Professor, Mathematics
M.A., University of California, Los Angeles
B.A., University of California, Los Angeles

JEPSON, ROSALBA

Professor, Nursing
M.S., University of Phoenix
B.S., University of Phoenix
A.S., Imperial Valley College

KANYI, MICHAEL

Assistant Professor/Coordinator, Agricultural Programs
Ph.D., Texas Tech University
M.S., Egerton University
B.S., Egerton University

KELLY, NANETTE

Professor, Art and Humanities
Ph.D., The Union Institute
M.A., Southern California School of Theology, Claremont
B.A., California State University, Fullerton

KEMP, ELIZABETH

Assistant Professor, English as a Second Language
M.A., University of California, Irvine
B.A., San Diego State University

KITZMILLER, JILL

Professor, Mathematics
M.A., San Diego State University
B.A., University of California, San Diego

KNAAK, MANFRED

Professor, Anthropology
M.A., San Diego State University
B.A., San Diego State College

LAVERY, RUSSELL

Professor, Astronomy/Physical Science
Ph.D., University of Hawaii, Manoa
M.A., University of Hawaii, Manoa
B.S., University of Massachusetts

LAY, NANCY

Professor, Reading
M.A., San Diego State University
B.A., San Diego State University
A.A., Imperial Valley College

LEHTONEN, ERIC

Professor, Mathematics
M.A., San Diego State University
B.A., San Diego State University

LEON, ALLYN

Professor, Mathematics
M.S., Texas A&M University
B.A., University of California, San Diego

LOFGREN, MARY

Counselor, Professor
M.A., University of Redlands
B.A., University of Redlands

LOPEZ, ROSALIE

Upward Bound Project Director, Professor
M.Ed., University of San Diego
B.A., San Diego State University

LOVITT, PAIGE

Professor, Counselor
M.S., California State University, Fresno
B.A., California State University, Fresno

MADANI, BEHRANG

Assistant Professor, Chemistry
Ph.D., Louis Pasteur University
M.S., Louis Pasteur University
B.S., Azad University

MADANI, SETARAH

Assistant Professor, Biology
BS., Shahid Beheshi University
MS., Alzakra University

MARQUEZ, RALPH

Counselor, Professor
M.Ed., University of San Diego
B.A., University of California, San Diego

MARQUEZ, RUMALDO

Assistant Professor, Communication Studies
M.A., Gonzaga University
M.S., California State University, San Bernardino
B.A., California State University, San Bernardino
A.A., Imperial Valley College

MARTINEZ, ANDRES

Professor, Computer Information Systems
M.S., National University
B.A., San Diego State University
A.S., Imperial Valley College

MARTY, KEVIN

Professor, Geology
M.S., University of New Orleans
B.S., Central Washington University

MECATE II, JAMES

Professor, Exercise Science, Wellness & Sports
M.S., Brigham Young University
B.S., Brigham Young University

MENDOZA, LIISA

Professor, American Sign Language
B.S., University of Arizona

MERCADO, MARIA LOURDES

Counselor, Professor
M.A., Point Loma Nazarene University
B.A., San Diego State University
A.A., Imperial Valley College

MINOR, MONICA

Counselor, Assistant Professor
M.A., Point Loma Nazarene University
B.A., San Diego State University

MIRANDA, FRANK

Professor, Air Conditioning & Heat Ventilation
Contractors State License

MORA, CRISTAL

Assistant Professor, Nursing
M.S., University of Phoenix
B.S., University of Phoenix

MORRIS, AUDREY

Associate Professor, Reading
M.S., Buffalo State University
M.S., University of Oklahoma
B.A., Mercer University

MOSS, SUSAN

Professor, Biology
M.S., University of Florida
M.S., University of Oklahoma
B.A., Mercer University

MYERS, CERISE

Assistant Professor, Art History
Ph.D., University of Minnesota
M.A., Bowling Green State University
B.S., Union College

NAVA, NORMA

DSP&S Coordinator, Professor
M.S., San Diego State University
B.S., San Jose State University

NELIPOVICH, JILL

Professor, Mathematics
M.A., San Diego State University
B.A., San Diego State University

NUÑEZ, NORMA

Student Success and Support Coordinator, Professor
M.S., San Diego State University
A.B., San Diego State University
A.A. Imperial Valley College

NUÑEZ, ROXANNE

Counselor, Assistant Professor
M.S., University of Phoenix
B.S., San Diego State University

ORFANOS-WOO, STELLA

Counselor, Professor
M.A., Point Loma Nazarene College
B.A., University of California, Riverside

ORTIZ, DANIEL JR.

Assistant Professor, Nursing
MSN., Grand Canyon University
BSN., University of Phoenix
ADN., Imperial Valley College

PAGE, BRUCE

Professor, Speech/Journalism
M.A., American University
B.A., University of British Columbia
A.A., Skagit Valley College

PASTRANA, LETICIA

Professor, English as a Second Language
M.A., Monterey Institute of International Studies
B.A., University of California, Riverside

PATEL, ARUNA

Assistant Professor/Coordinator, Alcohol and Drug Studies
BA., San Diego State University
AA., Imperial Valley College
AS., Imperial Valley College

PATTERSON, JAMES

Professor, English
Ph.D., The Union Institute
M.A., Arizona State University
B.A., Grand Canyon University

PAULEY, PATRICK

Professor, Biology
Ed.D., Texas Tech University
M.S., California State Polytechnic University
B.S., California State Polytechnic University
A.S., West Hills Community College

PESQUEIRA, EDUARDO

Minority Male Collaborative Coordinator
M.S.W., California State University, Northridge
B.A., San Diego State University

PLASCENCIA, JOSE

Counselor, Professor
M.S.W., San Diego State University
B.A., San Diego State University
A.A., Imperial Valley College
A.S., Imperial Valley College

PONCE, JOSEFINA

Professor, English as a Second Language
M.A., Northern Arizona University
B.A., San Diego State University
A.A., Imperial Valley College

PRADIS, RICARDO

Professor, Automotive Technology
Universal Technical Institute, Phoenix AZ

RANGEL, JAVIER

Professor, Spanish
Ph.D., University of California, Los Angeles
M.A., California State University, San Diego
A.B., California State University, San Diego
A.A., Imperial Valley College

REYES, BARBARA

Assistant Professor, Sociology
M.A., California State University, San Marcos
B.A., California State University, San Marcos

RICE, SYDNEY

Professor, English as a Second Language
M.A., California State University, Long Beach
B.A., Whitworth College

ROBINSON, ANDREW

Associate Professor, Exercise Science, Wellness, Sports & Men's Basketball Coach
M.PH., California State University, Fresno
B.A., California State University, Fresno

RODILES, NICOLE

Associate Professor, Psychology
M.A., San Diego State University
B.A., San Diego State University

RODRIGUEZ, KATHY

Associate Professor, Administration of Justice
M.S., National University, San Diego
B.S., San Diego State University

ROMAN, JOSE SR

Assistant Professor, Electrical Wiring/Renewable Energy
BS., California State Polytechnic University
AS., Imperial Valley College

ROMERO, YOLANDA

Counselor, Professor
M.A., United States International University
B.A., San Diego State University
A.A., Imperial Valley College

ROWLEY, DEIRDRE

Professor, English
M.A., Northeastern University
B.A., University of New Hampshire

RUIZ, ANGELICA*Professor, Business*

M.A., California State University, San Bernardino
 B.A., Loma Linda University
 A.A., Imperial Valley College

RUIZ, JOSE*Professor, Spanish*

Ph.D., University of California, San Diego
 M.A., San Diego State University
 B.A., San Diego State University

SANCHEZ-DOMINGUEZ, ROMANO*Professor, Spanish*

M.A., University of California, San Diego
 B.A., University of California, San Diego

SANDOVAL, ANGEL*Assistant Professor, English*

M.F.A., San Diego State University
 B.A., San Diego State University
 A.A., Imperial Valley College

SCHEUERELL, EDWARD*Professor, English as a Second Language*

M.A., University of Illinois
 M.A., (Spanish) University of Illinois
 B.A., University of Illinois

SERRANO, JESUS*Assistant Professor, AJ/POST Coordinator*

BS., University of Phoenix
 AS., Imperial Valley College

SHANER, CHRISTINA*Professor, English*

M.A., Carnegie Mellon University
 B.A., Texas Christian University

SHEPPARD, DAVID*Professor, Child, Family, and Consumer Sciences*

M.S., San Diego State University
 B.S., Cal State University Fullerton

SHOKOUFI, MARDJAN*Professor, Mathematics*

M.S., San Diego State University
 B.S., California State University, Northridge

SIGALA, ANA*CalWORKs Assessment Coordinator, Professor*

M.A., Point Loma Nazarene University
 B.A., San Diego State University

SIMPSON, SCOTT*Professor, English*

M.A., University of Illinois
 M.A., Michigan State University
 B.A., University of Maine

SOLOMON, LISA*Professor, History*

M.A., California State University, Stanislaus
 B.A., California State University, Fresno

SOTO, VERONICA*Counselor, Assistant Professor*

M.A., University of Redlands
 B.A., San Diego State University
 A.S., Imperial Valley College

SPENCE, CYNTHIA*Assistant Professor, English*

Ed.D., California State University, San Bernardino
 M.A., California State University, San Bernardino
 B.A., California State University, San Bernardino

STATON, M. ROBIN*Professor, Psychology*

M.A., West Virginia University
 B.A., University of Charleston

SULLIVAN, TERRIE*Assistant Professor, Nursing*

B.S., California State University, Dominguez Hills
 M.S., University of Phoenix
 A.S., Imperial Valley College

SUN, JIA*Assistant Professor, Biology*

Ph.D., University of California, Riverside
 M.S., California State University, Long Beach
 B.S., University of California, Los Angeles

SWIADON, GLENN*Professor, French*

Ph.D., Universidad Nacional Autonoma de Mexico
 M.A., University of California, Berkeley
 B.A., University of California, Berkeley

THELEN, AUSTEN*Associate Professor, Geography*

M.A., University of Kansas
 B.S., Michigan State University

TIRADO, XOCHITL*Distance Education Coordinator, Associate Professor*

M.A., National University
 M.S., San Diego State University
 B.A., San Diego State University
 A.A., Imperial Valley College

TREVINO, ELIZABETH*Counselor, Assistant Professor*

M.A., University of Redlands
 B.A., San Diego State University
 A.S., Imperial Valley College

TUCKER, JILL*Professor, Exercise Science, Wellness & Sports*

M.A., Grand Canyon University
 B.A., Eastern New Mexico University

VELASQUEZ, JOSE*Professor, Construction Technologies*

B.A., San Diego State University
 A.S., Imperial Valley College

VIZCARRA, MARGARITA*Counselor, Assistant Professor*

M.A., University of Redlands
 B.A., San Diego State University
 A.A., Imperial Valley College

VOLDMAN, ALEKSANDR*Professor, Mathematics*

Ed.D., Kishinev Math Institute
 M.S., San Bernardino University
 B.S., Northeastern University

WAINWRIGHT, MARY JO*Professor, History*

M.A., California State University, Hayward
 B.A., University of California, Berkeley
 A.A., Chabot College

WELLS, EDWARD*POST, STC, AJ, CSI Program Director/Coordinator, Associate Professor*

M.P.A., National University
 B.A., Marquette University

WORSHAM, SABRINA*Associate Professor, Speech*

M.A., California State University, Long Beach
 B.S., Bradley University

WRIGHT, BRADFORD*Professor, History*

Ph.D., Purdue University
 M.A., Purdue University
 B.A., University of Vermont

ZAZUETA, CATHY*Assistant Librarian, Professor*

M.L.S., University of British Columbia
 B.A., American College in Paris

Emeritus Faculty

AKERS, H. RUSSELL † Physically Limited 1973-1987	CARLSON, MARYLYNN † Nursing 1984-2009	FUESLER, JACK † Music 1964-1989	HILLHOUSE, ROSANNE English 1963-1999	LEWIS, STANLEY H. † Ag/Heavy Equip. Mech. 1969-1983
ALBERDA, STANLEY † Dean of Learning Services 1969-1993	CARNES, DENNIS † Biology 1995-2009	GAGE-MOSHER, RONALD Psychology 2000-2010	HINSHAW, JOHN † Mathematics 1942-1973	LOPEZ, HECTOR VP/Stu Svcs/Deputy Supt 1970-1999
ANDERSON, LESLIE Law Enforcement 1967-1983	CERDA, DANIEL † English 1974-2003	GALAMGAM, ADELE † Assistant Librarian 1965-1994	HUGHES, MERRLYNN Nursing 1986-1997	LOPEZ, REUBEN O. † Dean of Extended Campus 1974-2001
ARAGON, RAUL † Counselor, Professor 1973-2006	CERDA, ERNESTINE English 1974-2003	GARTIN, HERBERT † Psychology 1966-1978	JACOBSON, ERIC HISTORY 1992-2015	LOWE, JUANITA † Art 1961-1990
ARCHULETA, JOE Math 1974-2008	CHAMPAGNE, PHILIP † Welding 1971-1989	GENTRY, GLENN A. † Work Experience 1967-1981	JACKLICH, JOEL Music 1989-2006	LUOMA, CRAIG NURSING 1985-2015
BACON, JEANNE Physically Limited 1973-1985	DAVID, SAMUEL Biological Science/Chemistry 2001-2018	GERARD, ROBERT † Coord., Special Populations 1988-1993	JAIME, VICTOR Superintendent/President 1980-2018	MACCI, BARBARA Dean of Voc Ed 1976-1996
BANKS, STANLEY † Sociology 1966-1987	DAVIS, DONNA Nursing 2001-2015	GILBERTSON, THOMAS Art 2000-2012	JERGE, MICHAEL † Business, Economics 1967-1999	MAGNO, JANIS Dean of Enrollment Services 1983-2012
BARKALOW, N.C. † Law Enforcement 1974-1981	DECKER, VAN Music 2000-2015	GOLDSBERRY, RICK † EMS Program Director 2008-2016	JONES, SHIRLEY Counseling 1982-1999	MARCUSON, BRUCE † Administration of Justice 1990-2012
BARKER, MICHAEL † Anthropology 1968-1979	DePAOLI, JOHN A. † Superintendent/President 1965-1995	GRANADOS, ESTHER Business 1990-1999	KELSOE, LEON History & Exercise Science 1970-2003	MARKS, BETTY Nursing 1984-2000
BEOPE, FRANCES Counselor, Professor 1975-2012	DOMINGUEZ, GILBERT Superintendent/President 1996-2002	GREVATT, JAMES Counseling 1975-1996	KNOWLTON, ROGER Mathematics 1976-1999	MARTINI, DONALD English 2000-2014
BERNARD, WILLIS C. Art 1969-1988	DUFF, JACK † Counseling 1981-1985	GRIFFIN, WILLIAM † Business 1961-1992	KOSKI, RAUHA K. Nursing 1974-1981	MCCORMICK, J. MICHAEL † English 1972-2008
BILEY, PATTI English 1990-2011	FARRAR, LLOYD † History 1968-1992	GUZMAN, CESAR Counselor, Professor 1975-2011	LANFORD, CONWAY † Counseling 1970-1984	MCNEECE, BRIAN English 1986-2015
BILLINGS, LANELLE Business 1974-1999	FARRIER, PAUL History 1970-1994	HANN, CAROL Professor, English 1975-2006	LARSSON, HAROLD Astronomy 1966-1984	MEEK, AL Nursing 1974-2012
BILLINGS, ROBERT C. † Physical Ed, Auto Tech 1968-1999	FIELDS, MAX Health Education/Physical Education 1969-1994	HANN, RICHARD Humanities 1967-2003	LEE, CAROL Counselor, Professor 1996-2012	MELLINGER, ELWOOD † Agriculture 1961-1989
BORCHARD, MARY KAY Professor, Administration of Justice P.O.S.T. Coordinator 1983-2006	FINLEY, LUTHER † Engineering 1960-1981	HEBERT, ROGER Physical Education 1968-1994	LEGARRA, STANLEY Health Education/ Physical Education 1974-1992	MOSIER, LAURA Speech 2005-2015
BRUNGARDT, MARTHA † Nursing 1972-1985	FINNEY, DEE Physical Education 1967-1981	HIGGINS, S. BRENDA Allied Health 2002-2012	LEONARD, THOMAS † Psychology 1964-1972	MONTENEGRO, JEAN † English, ESL, and Exercise Science, Wellness & Sport 1966-2000
BUCKEL, EILEEN Dean of Learning Services 1993-2005	FISCHER, FRED † English 1982-2009	HIGGINSON, JANE Environmental Science 2005-2012	LEPTICH, DEAN † Speech 1965-1996	MOORE, ERNEST † Business 1970-1978

† Deceased

MOORE, ROBERT † Business 1970-1988	PETERSON, AVIS Nursing 1984-1991	SANDOVAL, LILIA Calworks Counseling Coordinator, Professor 1999-2017	STONE, JAMES † Mathematics/Music 1966-1986	WASSON, HENRY † Math/Science 1962-1994
NADEAU, NANCY English Instructor 1975-2002	POLLOCK-BLEVINS, DIEDRE Nursing 1985-2015	SANTOS, RAFAEL † Business 1975-1999	STROUD, VIVIAN Nursing 1980-2011	WEISSMAN, HARRY † English 1969-1980
NORRIS, TERRY R/W Lab Tutorial Specialist 2006-2017	RAULSTON, JEAN † English 1977-1994	SANTISTEVAN, JUDY Business, Work Experience 1999-2012	STUART, BARBARA English 1990-2007	WELCH, T. LARRY Librarian 1994-2004
NOVAK, RUTH † Dean of Counseling 1958-1972	RICE, PAULINE BENOIT † Foreign Language/Humanities 1963-1988	SAXE, ELLEN Nursing 1981-1990	SUCZEK, PETER Psychology and Sociology 1974-2005	WENDRICK, MARY English 1990-1999
NILSON, BARBARA Mathematics 1999-2014	RICHARDS-CROFT, DONNA Business 1998-2005	SECHRIST, WILLIAM † VP/Bus Svcs/Deputy Supt 1990-1998	SWANN, MARIE † English 1964-1980	WENDRICK, MEL † Director of DSP&S 1973-1999
ORENSZTEIN, ARMAND Math 1967-2009	RICHWINE, HAROLD † Chemistry/Physical Ed 1960-1999	SEIVERTSON, BRUCE Geography 2004-2012	THOMPSON, BLAINE † Business 1962-1999	WHITE, HOWARD † Law Enforcement 1969-1979
ORTEGA, ALICIA Foreign Language 1967-2009	RIEHLE, BETSY Mathematics 2002-2015	SMITH, MARY M. † English 1975-1996	THORNBURG, WILLIAM † VP for Business Services 1967-1990	WHITE, KEVIN Political Science 2005 - 2018
OVERMAN, RUTH † Business 1965-1981	RODDEN, ROSE † Health Education 1974-1986	SMITH, MELVIN † Disabled Student Programs 1990-2003	TOPPER, IRENE † Nursing 1976-1984	WHITE, RAY Automotive Technology 1964-1998
PAINE, THOMAS Computer Information Systems 1998-2011	RODGERS, GARY Anthropology/Sociology 1981-2010	SPEER, WILLIAM † English 1961-1987	UPSON, JOHN † English 1966-1977	WILHELM, ROBERT † Geography & Political Science 1970-2003
PAINE, YVONNE English 2007-2011	RODGERS, VALERIE Business 1988-2011	SPENCER, TERREL † Superintendent/President 1963-1978	VALENTINE, BARBARA Early Childhood Education 1978-1999	WILLIAMS, RICHARD † Psychology 1974-1999
PAULSON, CLARENCE † Business 1960-1988	RUDOLPH, WILLIAM † Dean of Vocational Education 1964-1993	STANDIFORD, SANDRA Counseling, Dean of Admissions 1967-2003	VALENTINE, MARTIN English 1976-2003	WILSON, PATRICIA English 1970-1991
PENDLEY, J.R. Science 1967-2003	SAMSON, WALTER † History 1963-1982	STEARNS, HAROLD † Speech 1973-1986	VON WERLHOF, JAY † Anthropology/Social Science 1973-1991	ZOBELL, SHERRY Math 1998-2009
PERSKE, GERALD † Science 1960-1994	SAMUELS, CARMEN Nursing 1971-1981		WALKER, JAMES D. VP/Academic Services/Deputy Superintendent 1969-1996	

† Deceased